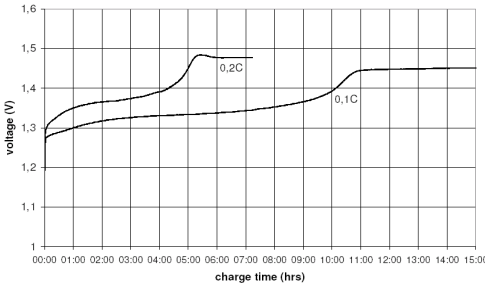
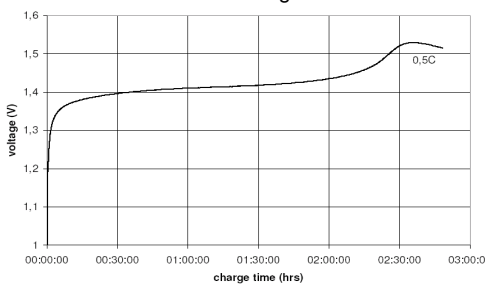
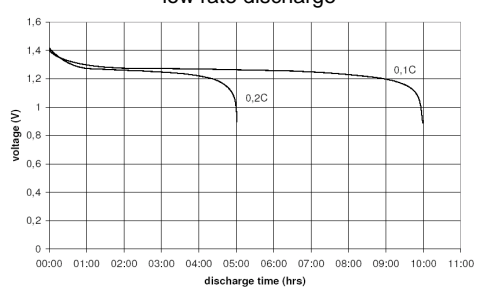
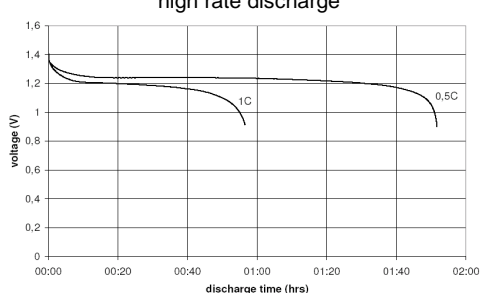


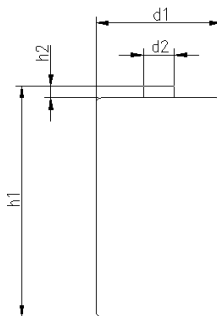
		Conditions	Diagrams	
cell type:		NiMH	standard charge 	
cell size:		C		
nominal voltage:	1.2	V	fast charge 	
max. charge voltage:	1.5	V		
		at standard charge (0.1C / 20°C)	low rate discharge 	
capacity				
nominal:	4050	mAh		high rate discharge 
minimum:	4000	mAh		
	3600	mAh		
		discharge at 0.2C		
		discharge at 0.2C		
		discharge at 1C		
		1.0V end discharge voltage		
		ta: 20°C		
max. continuous discharge current:	4000	mA	ta: 0...45°C	
charge		current	time	
standard charge:	400	mA	16hrs	
quick charge:	1150	mA	4hrs	
fast charge:	2000	mA	2.2hrs	
recommended charge termination control parameters:	0...5	mV	- delta V	
	0.8...1	°C	temperature rise per minute	
	45...50	°C	TCO (temperature cut off)	
trickle charge current:	40...200	mA	(recommended)	
continuous overcharge: (less than 1 year)	≤ 400	mA	no conspicuous deformation no leakage	
internal resistance: (impedance)	≤ 20	mΩ	at 1KHz battery fully charged	
life expectancy:	≥ 500	cycles	acc. IEC standard	
self discharge				
charge retention: (at ≤ 20°C ambient)	≥ 80	%	after 6 months storage	
	≥ 75	%	after 12 months storage	
initial capacity:	≥ 3000	mAh	within 30 days after delivery discharge at 0.2C	
ambient temperature range:	0...45	°C	standard charge	
	10...40	°C	fast charge	
	- 20...60	°C	discharge (≤1.0C)	
	0...45	°C	discharge (>1.0C)	
	- 20...55	°C	storage (≤3months)	
	- 20...45	°C	storage (≤6months)	
	- 20...35	°C	storage (≤24months)	


QCT1: 20/3800/25
QCT2: 30/3600/30

mechanical specifications

cell dimensions (incl. label)

diameter d1:	max.	26	- 1.0	mm
diameter d2:		xx		mm
height h1:		49	- 1.0	mm
height h2:		xx		mm
weight:		80		g



	ANSMANN Specifications for model:	C - 4000mAh low self discharge flat top in plastic bag with Z tags
	data sheet no. / part no.	2310-3007
	version no.	V0
	author / date	JE/ 2012-08-09