

**cell type:** NiMH  
**cell size:** D

**nominal voltage:** 1.2 V  
**max. charge voltage:** 1.5 V

**capacity**  
 nominal: 9000 mAh  
 minimum: 8500 mAh  
 7650 mAh

**max. continuous discharge current:** 27 A  
 ta: 20°C

**charge**  
 standard charge: 900 mA 14...16hrs  
 fast charge: 3600 mA 2.2hrs

recommended charge termination control parameters:  
 0...5 mV - delta V  
 0.8...1 °C temperature rise per minute  
 45...50 °C TCO (temperature cut off)

trickle charge current: 80...400 mA (recommended)

continuous overcharge: ≤ 900 mA  
 (less than 28 days) no conspicuous deformation  
 no leakage

**internal resistance:** ≤ 6 mΩ  
 (impedance) at 1KHz battery fully charged

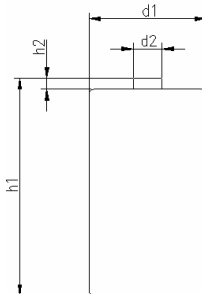
**life expectancy:** ≥ 500 cycles acc. IEC standard

**self discharge**  
 charge retention: ≥ 80 % after 6 months storage  
 (ta: 20°C) ≥ 75 % after 12 months storage

**ambient temperature range:**  
 0...45 °C standard charge  
 10...35 °C fast charge  
 - 18...55 °C discharge (≤1.0C)  
 0...45 °C discharge (>1.0C)  
 - 20...55 °C storage (≤1month)  
 - 20...45 °C storage (≤3months)  
 - 20...35 °C storage (≤12months)

**mechanical specifications**

cell dimensions  
 diameter d1: 33.0 - 0.8 mm  
 diameter d2: 10.0 mm  
 height h1: max. 61.0 mm  
 height h2: 0.0 mm  
 weight: approx. 152 g



**Conditions**

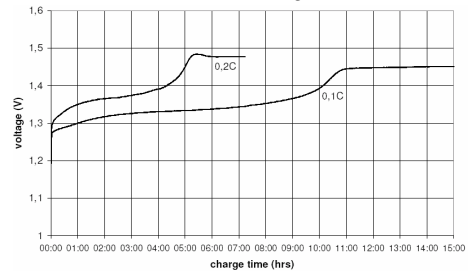
at standard charge  
 (0.1C / 20°C)

discharge at 0.2C  
 discharge at 0.2C  
 discharge at 1C  
 0.9V end discharge voltage  
 ta: 20°C

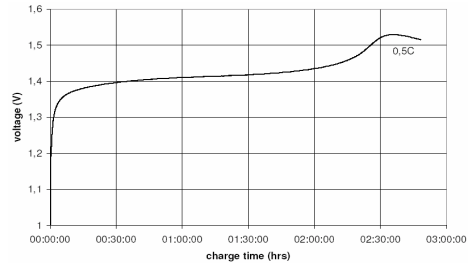
ta: 20°C

**Diagrams**

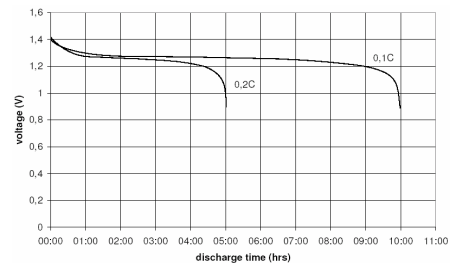
standard charge



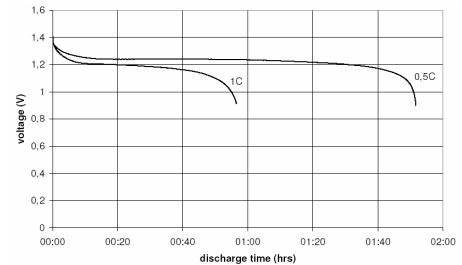
fast charge



low rate discharge



high rate discharge



<b>ANSMANN Specifications for model:</b>	<b>D - 8500mAh LSD flat top</b> in
	<b>plastic bag with Z tags</b>
data sheet no. / part no.	2314-3003
version no.	V0
author / date	Eisenreich/ 17.01.2012

Manufacturer reserves the right to alter or amend the design, model and specification without prior notice