

KNIPEX Quality – Made in Germany



Pliers Wrench, VDE insulated

Now also for working on electrical installations



 **1000 V**
DIN EN/IEC 60900

NEW

- With scale for presetting the opening width
- No deformation of soft nuts (Cu)
- Pliers and Wrench in a single tool

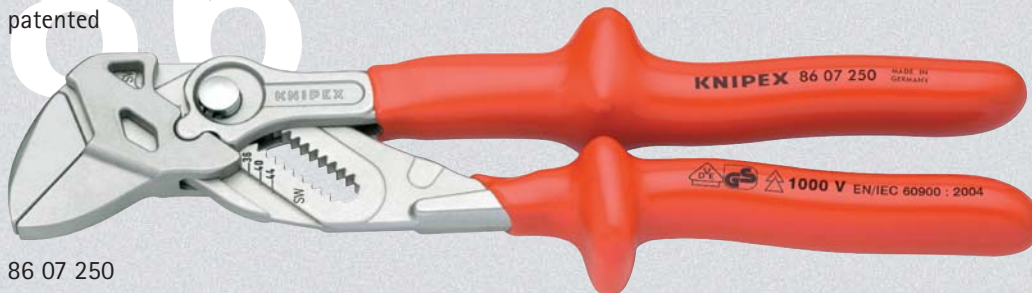


Pliers Wrench, VDE insulated

Now also for working on electrical installations

86 Pliers Wrench

patented



86 07 250

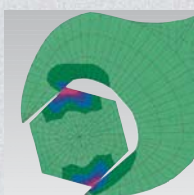
- ▶ excellent for gripping, holding, pressing and bending workpieces
- ▶ zero backlash jaw surface pressure prevents damage to edges of sensitive and soft nuts (Cu)
- ▶ with scale for presetting the opening width apart from the workpiece
- ▶ no unintentional shift of the gripping jaws and no slipping of the joint
- ▶ parallel jaws allow infinitely variable gripping of all widths to the specified maximum size
- ▶ the action of the jaws allows screwed connections to be tightened and released quickly using the ratchet principle
- ▶ lever transmission greater than 10 – 1 for strong gripping power



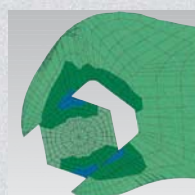
1000 V
DIN EN/IEC 60900



Scale for presetting the opening width apart from the workpiece



Open End Wrench:
close-fitting only to the opposed edges -->
Deformation



Pliers Wrench:
zero backlash adjustment to the wrench surfaces -->
No Deformation

Article-No.	EAN-Code	Head	Handles	Working Capacities		
				Length mm	mm	g
86 07 250	065067	nickel plated	plastic dipped insulated  1000 V VDE-tested	1 3/4	46	635



Warning! Please do strictly observe the operation instructions!

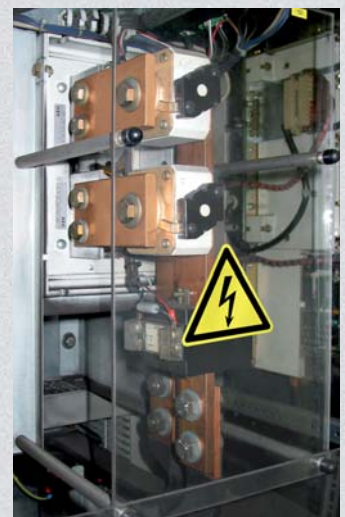
Dealer:

KNIPEX-Werk
C. Gustav Putsch KG

P.O. Box 12 04 05
42349 Wuppertal – Germany

Phone: +49 202 / 47 94-0
Fax: +49 202 / 47 74 94

Internet: www.knipex.com
E-Mail: info@knipex.de



For working on electrical installations