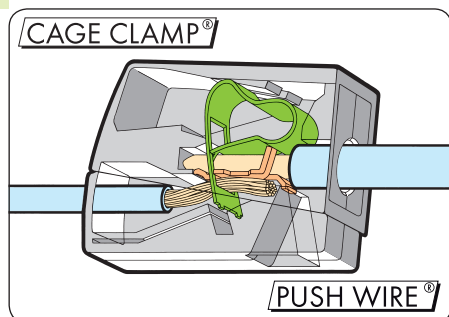


Lighting and "Service" Connectors Series 224

PUSH WIRE®

CAGE CLAMP®



Installation side
1.0 – 2.5 mm² "s"
Lighting side
0.5 – 2.5 mm² "s+f-st"
400 V/4 kV/2**; I_N 24 A

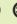
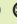
AWG 14 – 12

AWG 20 – 16
300 V, 20 A

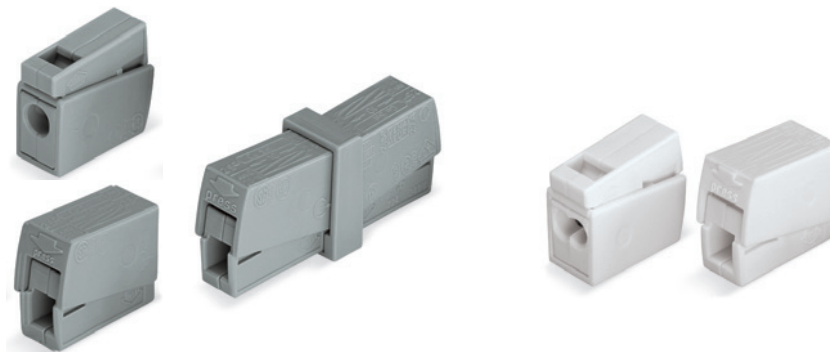
① Approvals

Installation side
2 x 1.0 – 2.5 mm² "s"
Lighting side
0.5 – 2.5 mm² "s+f-st"
400 V/4 kV/2**; I_N 24 A

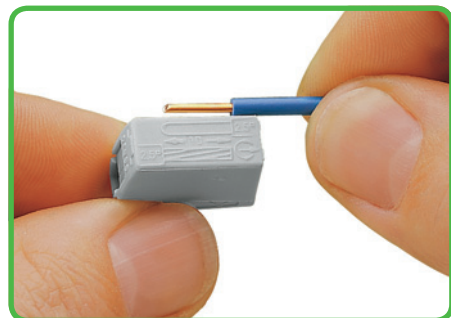
AWG 16 – 14

AWG 20 – 16
300 V, 4 A  

① Approvals

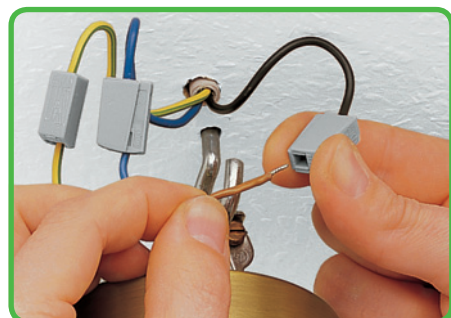


Stripped length



Strip conductor to 9 – 11 mm / 0.39 in.

Conductor termination



Lighting side terminations:
Press button fully and insert stripped conductor into square entry and release.



Installation side terminations:
Insert stripped solid conductor into entry and push until it hits the stop.

CAGE CLAMP® clamps the following copper conductors:



solid



stranded



fine-stranded



tip bonded



with crimped ferrule ②



with crimped pin terminal

The PUSH WIRE® connection clamps the following copper conductors:



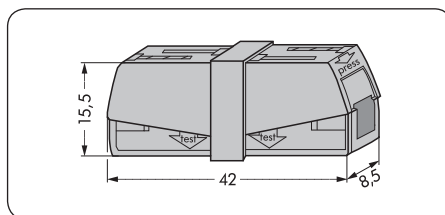
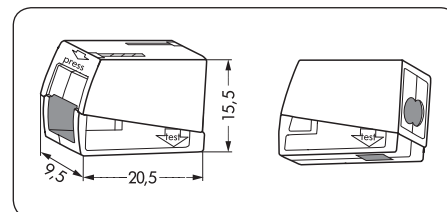
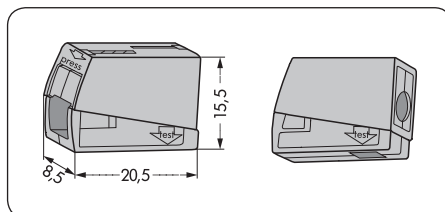
solid

① Approvals are available online at: www.wago.com.

Strip length, see packaging or instructions.

Color	Item No.	PU	Color	Item No.	PU
Lighting connectors,			2-conductor lighting connectors,		
standard version,			standard version,		
continuous service temperature 105 °C,			continuous service temperature 105 °C,		
gray	224-101	1000 (10 x 100)	white	224-112	1000 (10 x 100)
Version for increased			Version for increased		
continuous service temperature 120 °C,			continuous service temperature 120 °C,		
black	224-104	100	black	224-114	100
"Service" connector					
gray	224-201	50			

Dimensions (in mm) and handling



Testing through separate test slot.