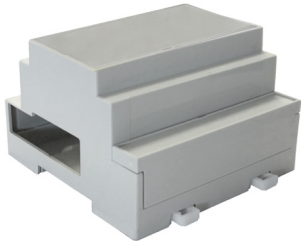


Raspberry Pi Style Enclosure

DIN-Rail Pi B+/Pi 2/Pi 3 Enclosure



No screws, no glue - just add your Raspberry Pi filling.

Features:

- Designed to house the Raspberry Pi B+/Pi 2 or Pi 3 via clip in design - No Screws Required.
- All cut-outs are pre-cut into the case - No Mods Required.
- I/O connector can be accessed through the terminal guard.
- Slot for display ribbon cable
- DIN Rail mountable
- Wall mountable
- Moulded in PC (polycarbonate)
- L(88mm) × W (90mm) × H (58mm)

Part Number Table

Description	Part Number
DIN Rail Raspberry Pi Enclosure - Grey Lid	MC001476

