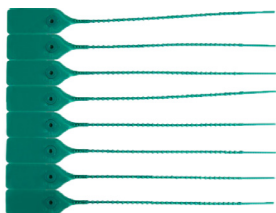


Cable Tie

pro-POWER



Description

This product is a multipurpose, pull tight seal designed to provide security applications and reduce losses in a variety of industries. It is an upgraded version of Pack Lock, designed to have higher breaking strength and at the same time more user friendly with its new side tear-off design.

Applications

- Cash Bags
- Courier Bags
- Security containers
- Roll cage pallets/ bonded cage doors

Features

- A secure acetal locking mechanism
- 28mm × 50mm tag size.
- With side tear off option, requires no tool for removal
- Variable loop design, available in different strap lengths

Benefits

- Enhanced security, thus reducing losses
- Large tag surface for printing
- Easy removal without the need for cutting tool, improving health & safety compliance
- Suitable for sealing a range of bag and container sizes

Specifications

Cable Tie Colour : Green
Cable Tie Length : 250mm

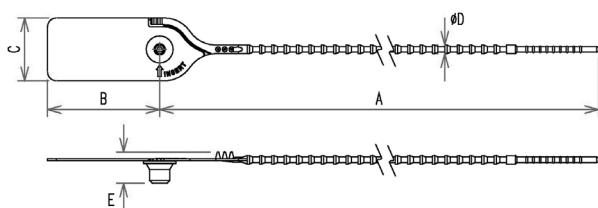
Material

Seal Body - Polypropylene
Locking Jaw - Acetal (POM)

Break Strength

>20kg-f / 44.1lb-f

Dimensions



A	B	C	D	E
mm [inch]	mm [inch]	mm [inch]	mm [inch]	mm [inch]
250 [9.84]	50 [1.97]	28 [1.1]	3.8 [0.15]	13.9 [0.55]

Part Number Table

Description	Part Number
Lock Pull 250mm, Green	SECURE 1301

pro-POWER