

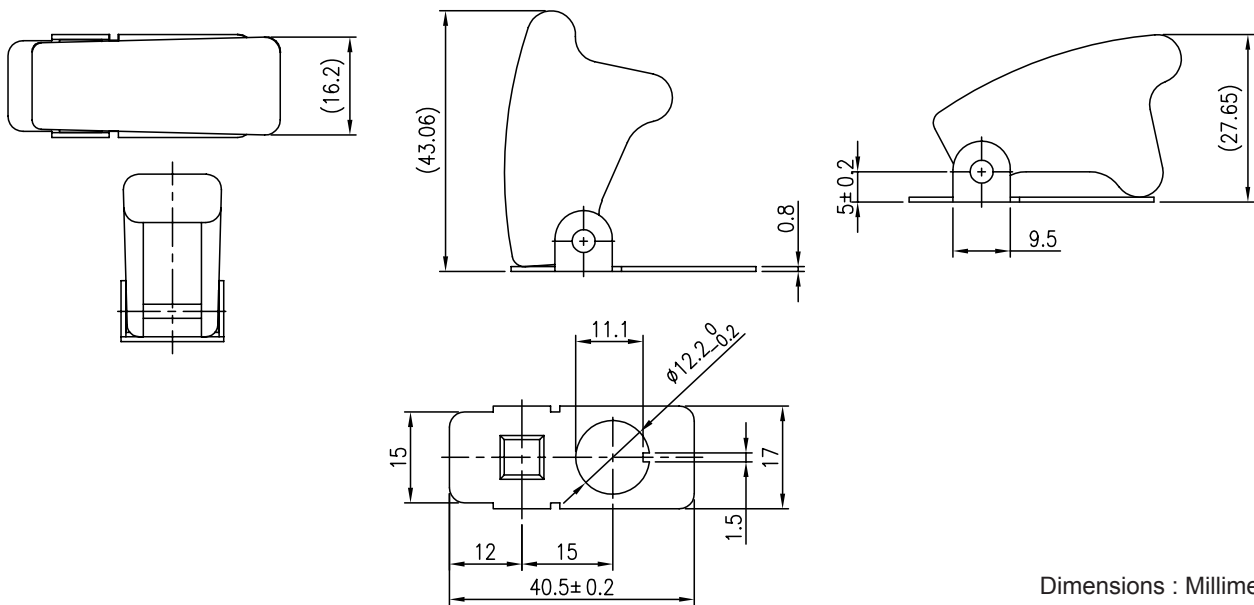
# Safety Cover



## Features

- Face plate is steel, with black glossy finish. Spring-loaded switch cover is ABS.
- Mounting Hole Diameter: 12.2mm (0.481").
- Accepts switches with standard 12mm or 15/32" diameter mounting stems.
- Accepts standard 17.5mm (11/16") switch handles

## Diagram



Dimensions : Millimetres  
 Tolerance: ±0.1mm

