

EPOXIES... strong, long lasting & solvent free.

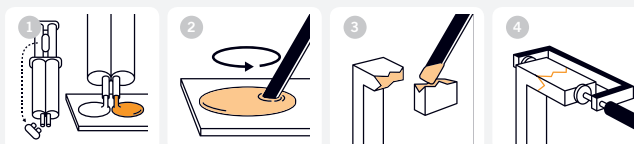
w = Working h = Handling fs = Full Strength

The Araldite® 2-part Epoxy Adhesive range has an outstanding heritage for quality and strength, and is recognised as the strongest and most durable adhesive in the market place.

PRODUCT	SIZE / TYPE	ITEM CODE	CARTON QTY
STANDARD	15ml x 2 Tubes	ARA-400001	6
	100ml x 2 Tubes	ARA-400002	6
	24ml Syringe	ARA-400003	6
RAPID	15ml x 2 Tubes	ARA-400005	6
	100ml x 2 Tubes	ARA-400006	6
	24ml Syringe	ARA-400007	6
FUSION	3g Syringe	ARA-400013	12
	10g Syringe	ARA-400014	12
INSTANT	24ml Syringe	ARA-400012	6
CRYSTAL	15ml x 2 Tubes	ARA-400008	6
STEEL	15ml x 2 Tubes	ARA-400010	6

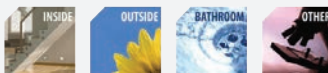
4 SIMPLE STEPS TO THE PERFECT BOND

- 1 Dispense
- 2 Mix thoroughly
- 3 Apply to both surfaces
- 4 Assemble carefully & allow to set



A HELPING HAND

Araldite
Product selector



Use the Product Selector to find the best product for the job.

Visit go-araldite.com or follow the QR code to find our "Product Selector"
A great tool for both you and your customers!



Araldite® STANDARD • Long working time

A long working time makes it perfect for complicated jobs which may require adjustment. Can be painted and sanded.



Araldite® FUSION • No mixing required

An extremely fast setting adhesive which sets clear. No mixing required due to the revolutionary dispensing nozzle. Can be painted and sanded.



Araldite® CRYSTAL • Dries crystal clear

A fast setting adhesive which dries crystal clear, perfect for jobs which require invisible joints or high transparency. Can be sanded or painted.



Araldite® RAPID • Fast setting

Fast setting & water resistant properties. Can be painted and sanded.



Araldite® INSTANT • Extremely fast setting

An extremely fast setting adhesive which dries clear. Is water resistant and can be painted or sanded.



Araldite® STEEL • Can be drilled

A fast setting adhesive that is perfect for metalwork like plumbing, car bodywork, gates and windows. Will not rust, fills gaps, is water resistant and can be painted or sanded.