

# RevealPRO™

**AFFORDABLE, HIGH-PERFORMANCE  
THERMAL IMAGING FOR THE PRO**

## KEY CAMERA SPECS

- 320 x 240 Thermal Sensor
- 32° Field of View
- 40 to 330°C Temperature Range
- 550 Meters Distance
- Works Day & Night
- 300 Lumen LED Flashlight

**Seek**  
thermal

[thermal.com](http://thermal.com)



RevealPRO is our most advanced handheld thermal imaging camera. Highly durable and easy to use, RevealPRO combines a high-performance 320 x 240 thermal sensor with intuitive software to help you work smarter. And, when you need it, a powerful 300-lumen LED light is available at the touch of a button. Offering adjustable thermal span, level, and emissivity settings, the RevealPRO delivers unprecedented high-resolution thermal imaging and software capabilities available at this price.

**Designed and Manufactured in Santa Barbara, California with Global Components.**

Product Name:	Seek RevealPRO
Available Date:	June 2016
Product Type:	Thermal Imaging Camera
Seek RevealPRO Color: Carbon Fiber	UPC: 855753005525 Part Number: RQ-EAAX
Export Regulations	Subject to US EAR Export Regulations.

Single Unit	
Included in the box:	<ul style="list-style-type: none"><li>• Seek RevealPRO</li><li>• Wrist Lanyard</li><li>• Welcome Guide</li><li>• USB Cable</li></ul>
Device Dimensions (H x W x D)	5 x 2.4 x 1.2 inches (127x61x30mm)
Device Weight:	6.25 ounces (177.2g)
Box Dimensions (H x W x D)	7 x 3.75 x 1.75 inches (177x95x44mm)
Box Weight:	13.025 ounces (369.25g)
Master Pack	
Included in the Master Pack	80 Units
Master Pack Dimensions	20 x 15 x 16 inches (508x381x406mm)
Master Pack Weight	65 pounds (29.5kg)

## KEY FEATURES

### High-Resolution Thermal Sensor

320 x 240 thermal sensor for maximum image clarity and sensitivity

### Adjustable Emissivity

Calibrate for reflective surfaces when accuracy is critical

### Wide, 32-Degree Field of View

Easily scan a large area to identify potential hazards in seconds

### Long-Lasting Rechargeable Battery

Up to 4 hours of continuous thermal imaging on a single charge

### See Through the Dark. Light Optional.

300 lumen LED flashlight available at the touch of a button

### Best-in-Class Temperature Range

Measure temperatures from -40° to 330°C

## BENEFITS & USES

### Accurately Inspect Mechanical and Electrical Equipment

Diagnose and assess the problem source quickly

### Safely Monitor Hazardous Environments

Evaluate potentially dangerous situations from a safe distance

### See More Thermal Detail Where You Need it Most

Level and span controls let you isolate and capture the details that matter

### Durable, All-In-One Device

Rugged, rubberized casing and intuitive controls go and work where you do

### Time of Day Won't Slow You Down

Safely examine any job site in daylight or total darkness

### Easily Document and Share

Save thermal images directly to the 2GB internal hard drive



## TECHNICAL SUMMARY

SPECIFICATIONS	DESCRIPTION
Thermal Sensor	320 x 240 (>76,000 pixels)
Detection Distance	550 Meters
Field of View	32 Degree FOV
Temperature Range	-40°C to 330°C
Frame Rate	>15 Hz FastFrame
Focus	Fixed Focus
Flashlight	300 Lumen LED
Display	6cm with Gorilla® Glass
Microbolometer	Vanadium Oxide
Thermal Sensitivity	< 75 mK
Spectral Range	7.5 - 14 Microns
User Interface	Self-Contained Device with 3 Button Navigation
Temp. Display Scale	Celsius, Fahrenheit, or Kelvin
Color Palettes	9 Options
Storage Media	2GB Internal Drive (>2,000 images)
Battery	Up to 4 Hours Continuous Thermal Imaging

For support and user guides  
visit [support.thermal.com](http://support.thermal.com)

## 300 LUMEN LED LIGHT



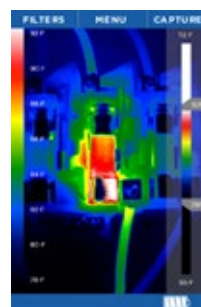
Seek RevealPRO combines powerful thermal insight and a high-performance LED flashlight in one durable device.

## USER INTERFACE



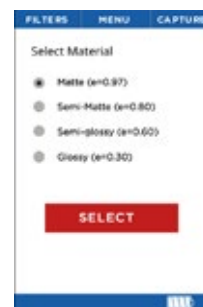
### PHOTOS

Capture and save thermal images directly to the internal 2GB hard drive



### SPAN & LEVEL

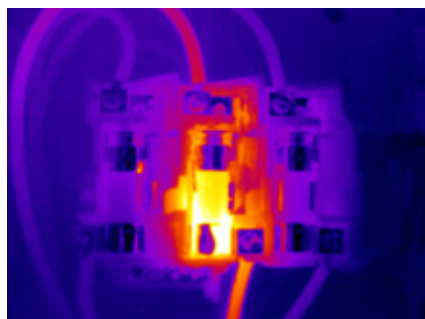
Isolate and capture the thermal details that matter



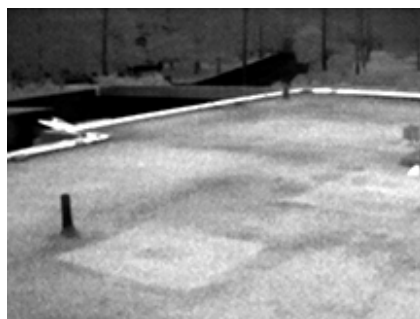
### EMISSIONITY

Calibrate for reflective surfaces when accuracy is critical

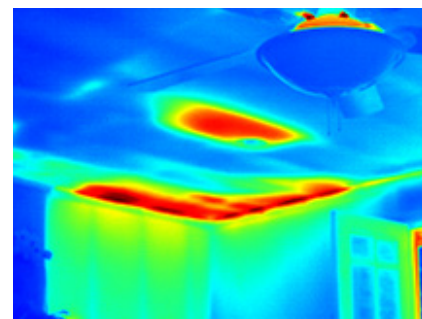
## THERMAL APPLICATIONS



ELECTRICAL INSPECTION



ROOF INSPECTION



INSULATION & HVAC INSPECTION

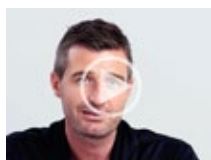
## CO-MARKETING SUPPORT



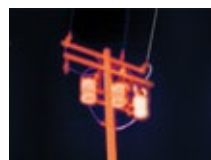
ENGAGING POP



PRODUCT VIDEOS



INSTRUCTIONAL VIDEOS



THERMAL PHOTOGRAPHY



TRAINING MATERIALS



TESTIMONIALS

## Seek more at thermal.com

111 Castilian Drive, Santa Barbara, CA 93117 USA

Seek Thermal engineers, designs and manufacturers high quality thermal imaging products and core platforms for consumer, commercial, and heat sensing IoT data applications. With headquarters in Santa Barbara, California, the global hub of thermal imaging innovation, the company has developed breakthrough thermal imaging camera cores that will enable a range of affordable products for use at home, work and play. For more information visit [thermal.com](http://thermal.com) and follow #seekthermal on Instagram and @seekthermal on Twitter.