

Click-Torque Set

We wanted to make it even easier for the users of the new Click Torque wrenches and have put together a practical set that allows torque controlled screwdriving with sockets and bits without the need for any further equipment.

New

Click-Torque A 6 Set 1



20 pieces; in a surface-preserving, compact and extremely robust textile box; low volume and weight for simplified mobility.

1 Click Torque torque wrench A 6 with 1/4" hexagon drive, covering a range of 2.5 Nm-25 Nm, accuracy $\pm 4\%$ of the set value, as per DIN EN ISO 6789-1:2017-07, for clockwise torque control, reversible ratchet, 45 teeth, easy setting and saving of the desired torque value, with audible and tactile locking when the scale values are reached (fine scale only in Newton meters), audible and tactile release mechanism when the set torque value is reached, ergonomic 2-component handle, 6 Zyklop sockets, 1 adapter 1/4" hexagon to 1/4" square, 11 bits

05130110001	
	Click-Torque A 6 1 x 1/4", 2,5-25 Nm
+	851/4 TZ PH 1 x PH 2x50
+	867/4 Z TORX® 1 x TX 15x50; 1 x TX 20x50; 1 x TX 25x50; 1 x TX 27x50; 1 x TX 30x50; 1 x TX 40x50
○	840/4 Z Hex-Plus 1 x 3,0x50; 1 x 4,0x50; 1 x 5,0x50; 1 x 6,0x50
○	870/1 1 x 1/4"x25 ¹⁾
○	8794 A 1 x 1/4"x56,0
○	8790 HMA 1 x 6,0x23,0; 1 x 7,0x23,0; 1 x 8,0x23,0; 1 x 10,0x23,0; 1 x 12,0x23,0; 1 x 13,0x23,0
	Hook and Loop Fastener Strip 1 x 50,0x240,0

¹⁾ With friction ball; for manual nut spinner sockets

Tip

Click-Torque A 6



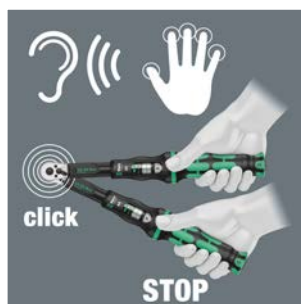
With 1/4" hex drive. The use of 1/4" sockets is also possible with the Wera adaptor 870/1 (also included in the set).

Click 1: Setting the scale values



With audible and tactile clicks when adjusting the scale values.

Click 2: Release mechanism



When the set torque value is reached, an audible and tactile mechanism triggers.

Exact



Precise to $\pm 4\%$ as per DIN EN ISO 6789-1:2017-07.