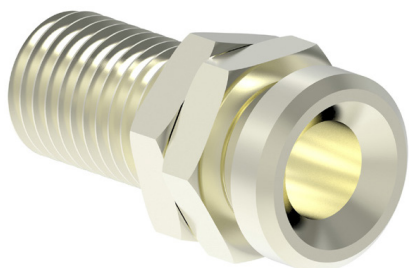


## 4mm Uninsulated Banana Jack w/ 4mm Hole Terminal - M6 Threaded Stud & Hex Nut



### Specifications

Connector Type	: 4mm Banana Jack
Connector Mounting	: Panel Mount
Termination Type	: 4mm Hole - M6 Threaded Stud & Hex Nut
Voltage Rating	: $\leq 33V$ AC, $\leq 70V$ DC
Current Rating	: 36A
Terminal Dimension	: M6 $\times$ 0.75

### Application

General purpose electric and electronic testing, controlling and measuring.

### Part Number Table

Description	Part Number
Straight 4mm Uninsulated Banana Jack w/ 4mm Hole Terminal / M6 Threaded Stud & Hex Nut, Panel, 33V AC/70V DC, 36A	72-14138

