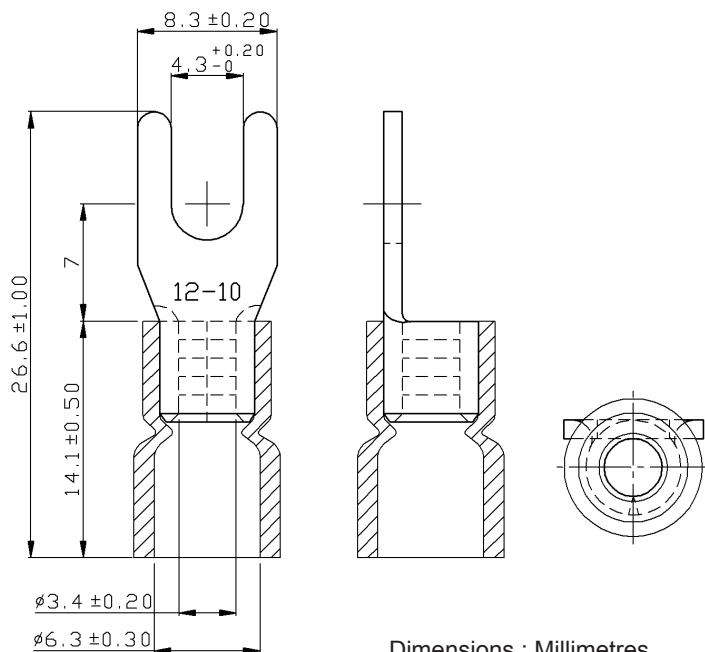


Vinyl Insulated (Easy Entry) Spade Terminal Butted Seam



Specifications:

Max. Electric Current	:	AWG	12	10
	:	AMP.	35	50
Max. Electrical Rating	:	105°C 600V Max.		
Insulation Material	:	Vinyl		
Insulation Colour	:	Yellow		
Terminal Material	:	Copper		
Wire Range	:	12AWG to 10AWG (4 - 6mm ²)		
Terminal Surface Treatment	:	Tin Plated		
Terminal Thickness	:	1mm		



Part Number Table

Description	Part Number
Vinyl Insulated (Easy Entry) Spade Terminals; Butted Seam, Yellow	SVES5-4

