

## Heavy Duty In-Line Fuse Holder w/ LED Warning Light 6.35mm × 31.8mm / 6.4mm × 30mm



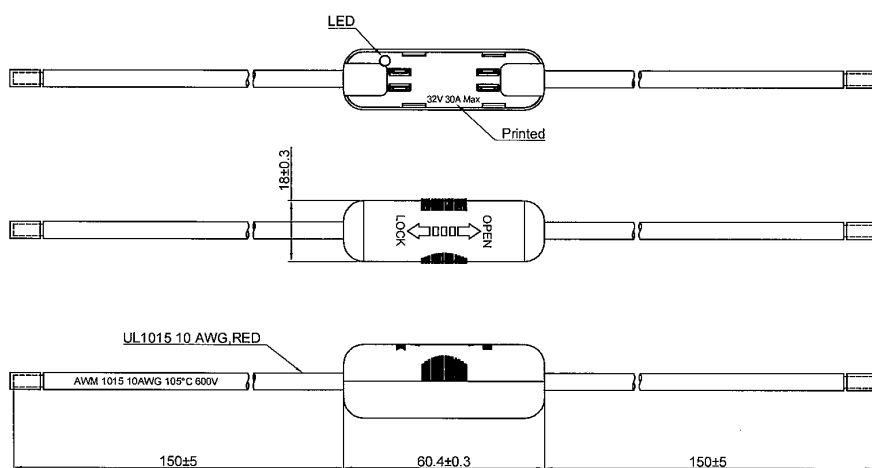
### Specifications

Fuse Holder Type	: Cartridge Fuse Holder
Fuse Holder Terminal	: Wire Leaded
Fuse Size	: 6.35mm × 31.8mm / 6.4mm × 30mm
No. of Fuses	: 1 Fuse
Current Rating	: 30A
Voltage Rating	: 32V DC
Insulation Resistance	: DC 500V 100MΩ Min.
Dielectric Strength	: AC 1000V for 1 minute

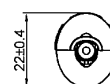
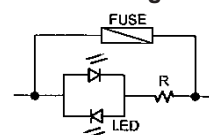
### Material Specifications

Housing	: Phenolic, UL94V-0, Black
Lens	: PC, UL94V-2
Terminals	: Brass, Tin Plated

### Diagram



### Circuit Diagram



Dimensions : Millimetres

### Part Number Table

Description	Part Number
Heavy Duty In-Line Fuse Holder w/ LED Warning Light, 6.35mm × 31.8mm / 6.4mm × 30mm	MC002806

