

# Screw-Mount Saddle-Type Cable Tie Mount

pro-POWER

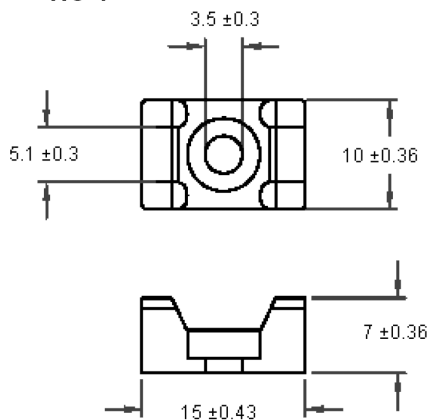
RoHS  
Compliant



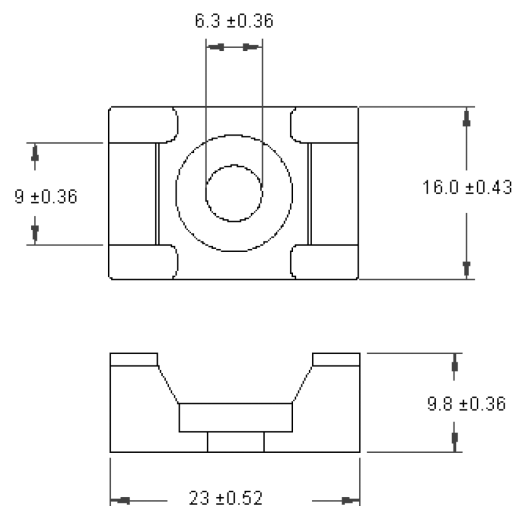
## Features

- Material : Nylon 6.6
- Colour : Natural
- Saddle design provides maximum stability to wire bundles
- To apply, simply fix mount with a screw and secure wire bundles with nylon cable ties

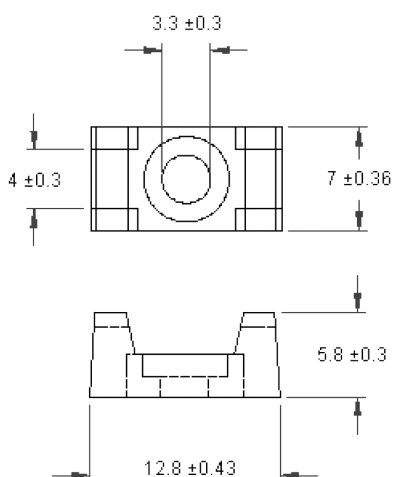
HC-1



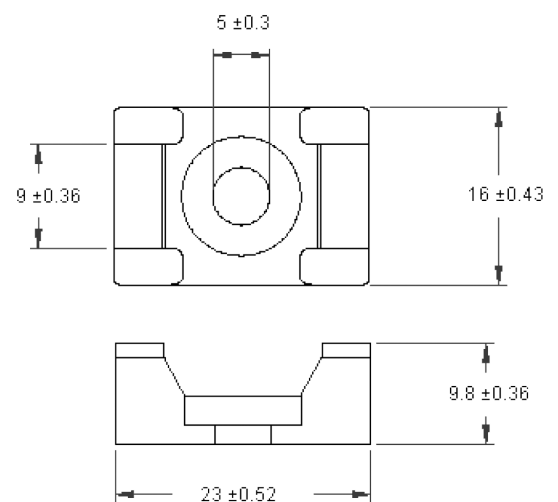
HC-2



HC-1S



HC-2S



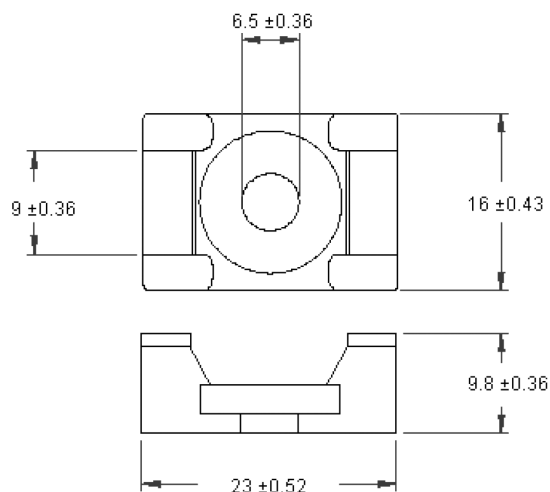
Dimensions : Millimetres

pro-POWER

# Screw-Mount Saddle-Type Cable Tie Mount

pro-POWER

HC-2L



Dimensions : Millimetres

Part Number Table

Description	Screw Hole	Cable Tie Width	Pack of	Part Number
Screw-Mount Saddle-Type Cable Tie Mount	3.5mm	5.1mm	100	HC-1
	3.3mm	4mm		HC-1S
	6.3mm	9mm		HC-2
	5mm			HC-2S
	6.5mm			HC-2L

pro-POWER