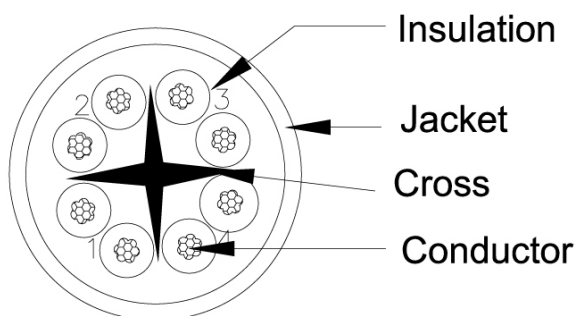
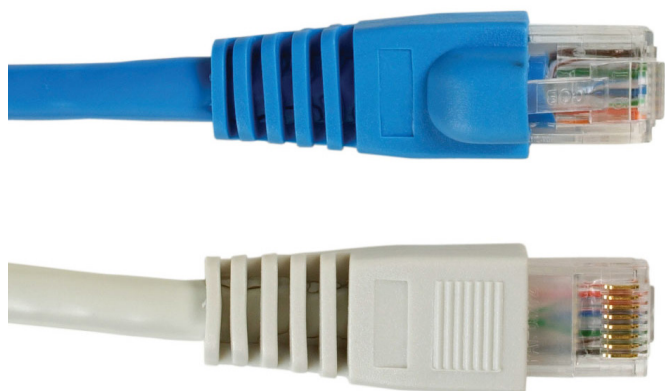


Cat6 Patch Cables 24 AWG Booted Cat6 UTP

Part No: 2996 - (Length) + (Colour) see chart

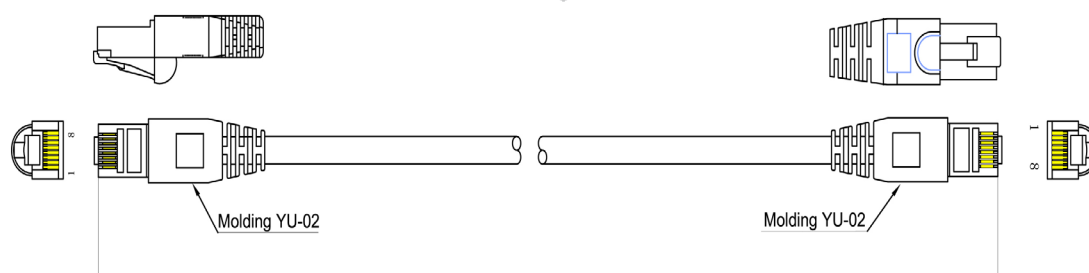
[View Online](#)

The range of Cat.6 patch cables are now available in 12 colours. Manufactured using Cat.6 stranded UTP cable, the fully moulded assemblies feature high quality RJ45 connectors ensuring system quality and integrity.



Features & Benefits

- Fully moulded cables incorporating the use of high quality RJ45 plugs.
- Manufactured using high quality 50 micron gold RJ45 plugs and UL approved Cat.6 stranded cable.
- Cable specification; 24 AWG Cat.6 UTP with built-in centre spine which separates out each of the 4 twisted pairs.
- Designed to give quality assured, fault-free data/voice transmission within high speed Gigabit style networks.
- Fully backward compatible cables with both Cat.5 and Cat.5E networks & systems.
- Available in various colours and lengths. Custom lengths available on request.
- Contact our Sales Department for our cable labelling service available on short lead time, price quoted is per label, normally 2 labels required per cable one at each end.



Cat6 Patch Cables

24 AWG Booted Cat6 UTP

Part No: 2996 - (Length) + (Colour) see chart

[View Online](#) 

Part Number Chart

Length	Beige 	Black 	Blue 	Brown 	Green 	Grey 
0.3 Metre	2996-0.3	2996-0.3BK	2996-0.3B	-	2996-0.3G	2996-0.3GY
0.5 Metre	2996-0.5	2996-0.5BK	2996-0.5B	2996-0.5BR	2996-0.5G	2996-0.5GY
1 Metre	2996-1	2996-1BK	2996-1B	2996-1BR	2996-1G	2996-1GY
1.5 Metre	2996-1.5	2996-1.5BK	2996-1.5B	2996-1.5BR	2996-1.5G	2996-1.5GY
2 Metre	2996-2	2996-2BK	2996-2B	2996-2BR	2996-2G	2996-2GY
3 Metre	2996-3	2996-3BK	2996-3B	2996-3BR	2996-3G	2996-3GY
5 Metre	2996-5	2996-5BK	2996-5B	2996-5BR	2996-5G	2996-5GY
8 Metre	2996-8	2996-8BK	2996-8B	2996-8BR	2996-8G	2996-8GY
10 Metre	2996-10	2996-10BK	2996-10B	2996-10BR	2996-10G	2996-10GY
15 Metre	2996-15	2996-15BK	2996-15B	2996-15BR	2996-15G	2996-15GY
30 Metre	2996-30	2996-30BK	2996-30B	2996-30BR	2996-30G	2996-30GY







Cat6 Patch Cables

24 AWG Booted Cat6 UTP

Part No: 2996 - (Length) + (Colour) see chart

[View Online](#) 

Part Number Chart

Length	Orange 	Pink 	Purple 	Red 	White 	Yellow 
0.3 Metre	2996-0.3RG	2996-0.3PK	2996-0.3PR	2996-0.3R	2996-0.3W	2996-0.3Y
0.5 Metre	2996-0.5RG	2996-0.5PK	2996-0.5PR	2996-0.5R	2996-0.5W	2996-0.5Y
1 Metre	2996-1RG	2996-1PK	2996-1PR	2996-1R	2996-1W	2996-1Y
1.5 Metre	2996-1.5RG	2996-1.5PK	2996-1.5PR	2996-1.5R	2996-1.5W	2996-1.5Y
2 Metre	2996-2RG	2996-2PK	2996-2PR	2996-2R	2996-2W	2996-2Y
3 Metre	2996-3RG	2996-3PK	2996-3PR	2996-3R	2996-3W	2996-3Y
5 Metre	2996-5RG	2996-5PK	2996-5PR	2996-5R	2996-5W	2996-5Y
8 Metre	2996-8RG	2996-8PK	2996-8PR	2996-8R	2996-8W	2996-8Y
10 Metre	2996-10RG	2996-10PK	2996-10PR	2996-10R	2996-10W	2996-10Y
15 Metre	2996-15RG	2996-15PK	2996-15PR	2996-15R	2996-15W	2996-15Y
30 Metre	2996-30RG	2996-30PK	2996-30PR	2996-30R	2996-30W	2996-30Y