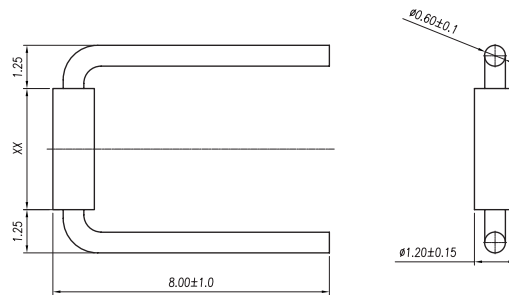


# Jumper Wire



## Diagram



Dimensions : Millimetres

Linear Dimension (Tolerance Standard GB/T 14486-2008)												≡	—	▭	//	⊥
Variable Range	to 6	Over 6 to 10	Over 10 to 18	Over 18 to 30	Over 30 to 50	Over 50 to 80	Over 80 to 120	Over 120 to 160	Over 160 to 200	Over 200 to 250	Over 250 to	all	to 5	Over 5 to 30	Over 30 to 120	Over 120 to
<b>Tolerance</b>	±0.1	±0.14	±0.19	±0.25	±0.32	±0.45	±0.57	±0.72	±0.88	±1.05	±1.25	0.5	0.025	0.06	0.12	0.4

### Notes:

- XX for lengths of jumper wires
- Wires Lengths, Colours and Quantity:
  - 2mm: bare wire, 25 Pcs
  - 5mm: Red, 25 Pcs
  - 7mm: Orange, 25 Pcs
  - 10mm: Yellow, 25 Pcs
  - 12mm: Green, 25 Pcs
  - 15mm: Blue, 25 Pcs
  - 17mm: Purple, 25 Pcs
  - 20mm: Grey, 25 Pcs
  - 22mm: White, 25 Pcs
  - 25mm: Brown, 25 Pcs
  - 50mm: Red, 25 Pcs
  - 75mm: Orange, 25 Pcs
  - 100mm: Yellow, 25 Pcs
  - 125mm: Green, 25 Pcs
- Wire Range: 22AWG/Single Conductor

### Part Number Table

Description	Part Number
350 Pcs Hard Jumper Wire	MC001811