

# Machine Screw Insulator

**DURATOOL**

**RoHS  
Compliant**



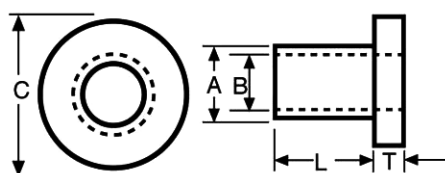
## Features

- Provides electrical insulation for metal machine screws
- Also be used as lightly loaded bearings
- Helps prevent electrolytic corrosion

## Specifications

Material : Nylon 66

Colour : Natural



Dimension Table

| Part Number | "L" Length | Screw Size | A | B   | C   | T |
|-------------|------------|------------|---|-----|-----|---|
| 164002003   | 3          | M2         | 3 | 2.1 | 4.2 | 1 |
| 164002004   | 4          | M2         | 3 | 2.1 | 4.2 | 1 |

Dimensions : Millimetres

Part Number Table

| Description                                       | Part Number |
|---|-------------|
| Nylon 66, Machine Screw Insulator M2 × 3, Natural | 164002003   |
| Nylon 66, Machine Screw Insulator M2 × 4, Natural | 164002004   |

**DURATOOL**