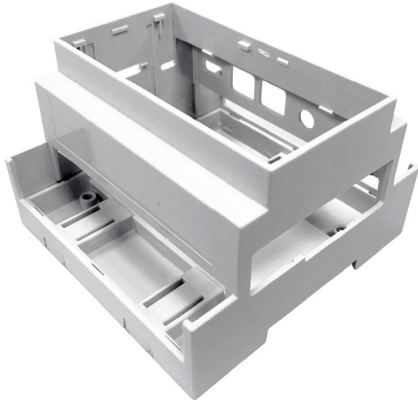


# Raspberry Pi 4B DIN Rail Mount Enclosures

**multicomp**PRO



Grey LID



Clear LID

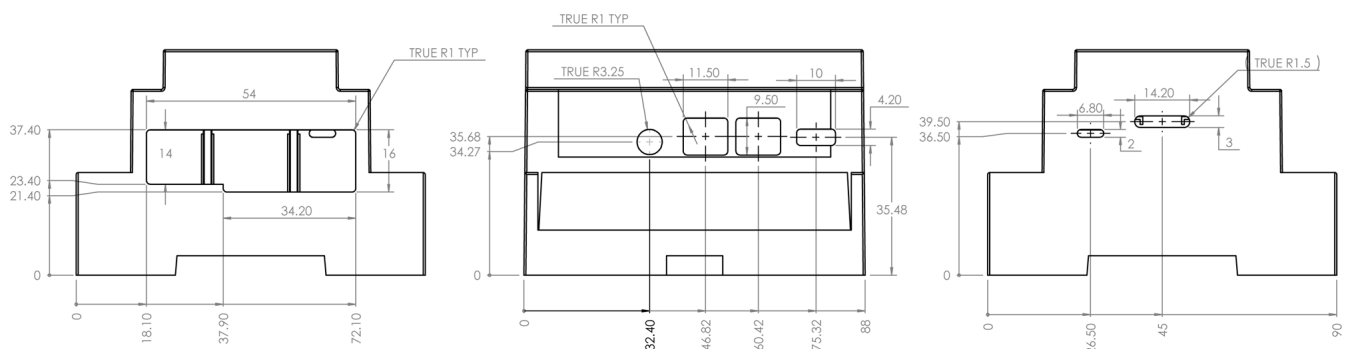
## Features

**No screws, no glue – just add your Raspberry Pi filling!**

- Designed to house the Raspberry Pi 4B via clip-in design - NO SCREWS REQUIRED!
- All cut-outs are pre-cut into the case - NO MODS REQUIRED!
- PI 4 board is mounted upside down so that a Pi HAT can be fitted
- Terminal guards can be left off to increase air flow
- Slot for display ribbon cable
- DIN Rail mountable or wall mountable
- Moulded in PC (polycarbonate)
- Material Thickness 3mm.

## Key Features

- High quality polycarbonate | DIN Rail mountable | Nomods required



**multicomp**PRO

# Raspberry Pi 4B DIN Rail Mount Enclosures

**multicomp**PRO

Part Number Table

Description	Dimension L x W x H	Part Number
DIN Rail Mount Enclosure, Raspberry Pi 4B, Grey Lid	88mm x 90mm x 58mm	MP001137
DIN Rail Mount Enclosure, Raspberry Pi 4B, Clear Lid		MP001138

**multicomp**PRO