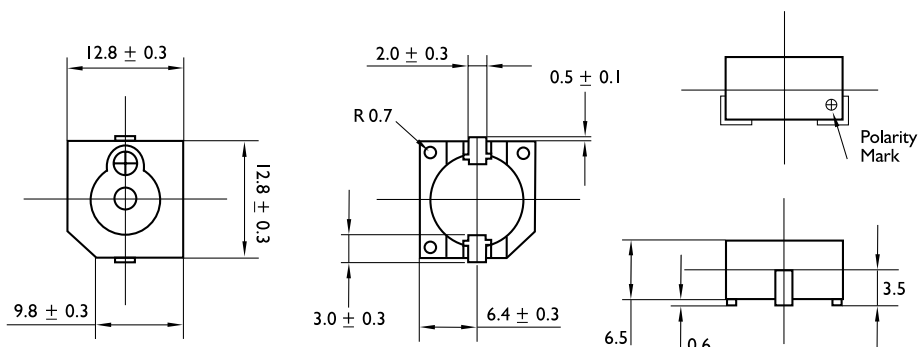


Electro Mechanical Indicators

multicompPRO

DC Devices (with internal drive circuits)

Surface Mount Type

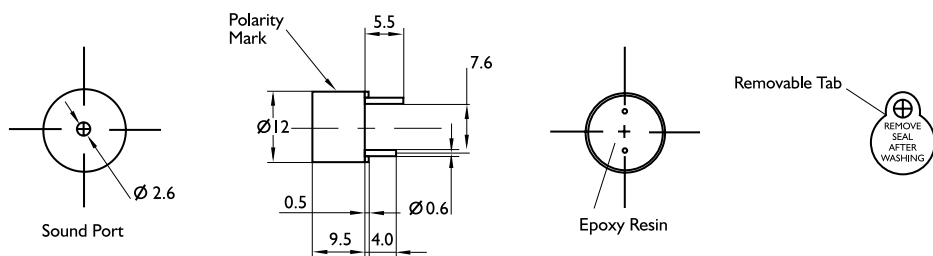

 Dimensions : Millimetres
 Tolerance: $\pm 0.5\text{mm}$

Specifications

Part Number	ABI-017-RC	ABI-018-RC
Rated Voltage	5V DC	12V DC
Operating Voltage	4 ~ 7VDC	8 ~ 15V DC
Rated Current	$\leq 30\text{mA}$	$\leq 30\text{mA}$
Sound Output level @ 20cm	$\geq 88\text{dB}$	$\geq 85\text{dB}$
Resonant Frequency	2400Hz $\pm 400\text{Hz}$	
Tone	Continuous	
Housing Material	PPS	
Operating Temperature	-20°C to $+70^{\circ}\text{C}$	
Storage Temperature	-30°C to $+80^{\circ}\text{C}$	
Weight	2g	

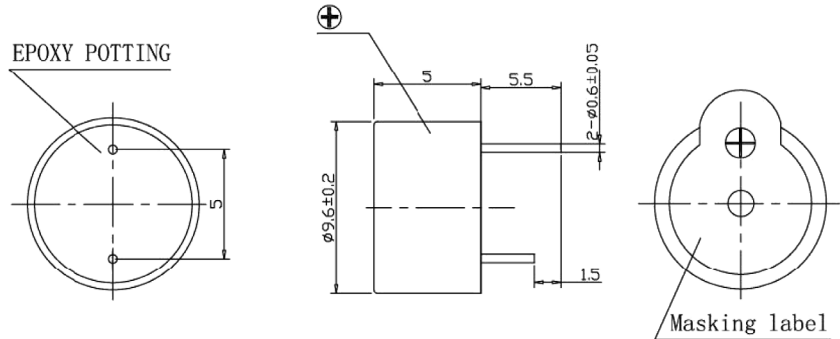
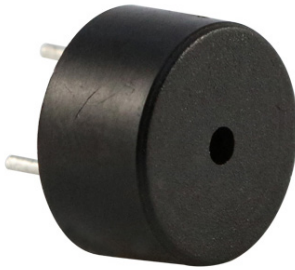
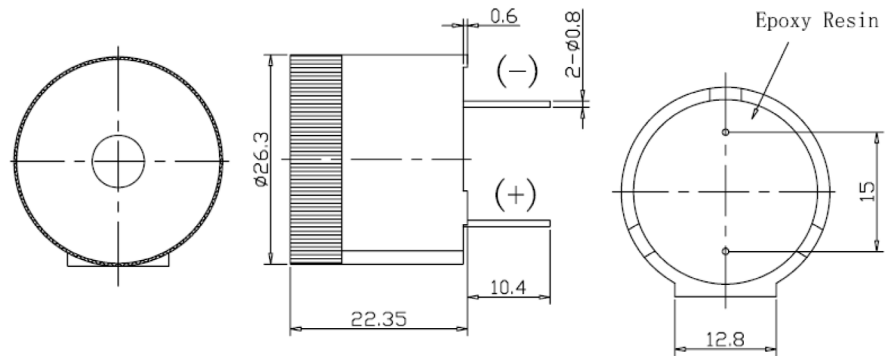
Through Hole Type

ABI-009-RC & ABI-010-RC


 Dimensions : Millimetres
 Tolerance: $\pm 0.5\text{mm}$
multicompPRO

Electro Mechanical Indicators

multicompPRO

ABI-057-RC

ABI-052-RC

 Dimensions : Millimetres
 Tolerance: $\pm 0.5\text{mm}$

Specifications

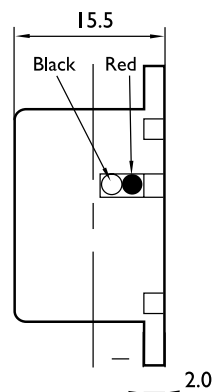
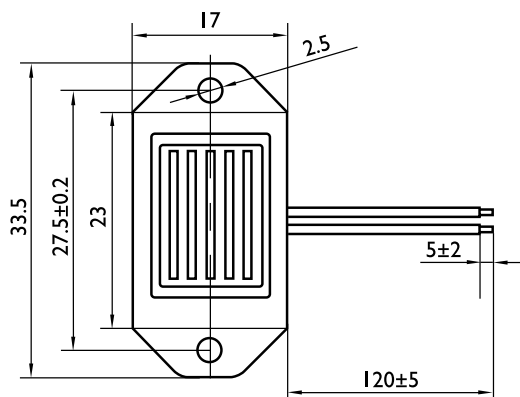
Part Number	ABI-009-RC	ABI-010-RC	ABI-052-RC	ABI-057-RC
Rated Voltage	6V DC	12V DC	12V DC	5V DC
Operating Voltage	4 ~ 8V DC	8 ~ 16V DC	5 ~ 18V DC	3 ~ 7V DC
Rated Current	$\leq 30\text{mA}$	$\leq 30\text{mA}$	$\leq 50\text{mA}$	$\leq 25\text{mA}$
Sound Output level @ 10cm	$\geq 85\text{dB}$		$\geq 100\text{dB}$	$\geq 80\text{dB}$
Resonant Frequency	2300Hz $\pm 300\text{Hz}$		2800Hz $\pm 500\text{Hz}$	2730Hz $\pm 300\text{Hz}$
Tone	Continuous			
Housing Material	Black Noryl		Grey Noryl	Black PBT
Operating Temperature	-25°C to +80°C	-20°C to +70°C	-30°C to +70°C	-20°C to +80°C
Storage Temperature	-30°C to +85°C	-30°C to +80°C	-40°C to +85°C	-30°C to +85°C
Pin Pitch	7.6mm	7.6mm	15mm	5mm
Weight	2g	2g	12g	1g

multicompPRO

Electro Mechanical Indicators

multicompPRO

Flange Mount - Wire Lead Type


 Dimensions : Millimetres
 Tolerance: $\pm 0.5\text{mm}$

Part Number	ABI-041-RC	ABI-028-12-RC
Rated Voltage	6V DC	12V DC
Operating Voltage	4 ~ 8VDC	9 ~ 15VDC
Rated Current	$\leq 25\text{mA}$	
Sound Output level @20cm	$\geq 75\text{dB}$	
Resonant Frequency	400Hz $\pm 100\text{Hz}$	
Tone	Continuous	
Housing Material	Black ABS	
Operating Temperature	-10°C to $+60^{\circ}\text{C}$	
Storage Temperature	-30°C to $+70^{\circ}\text{C}$	
Lead Wire	UL 1095 AWG26	
Lead Length	120mm	
Weight	10g	

multicompPRO