

# Inductive Proximity Sensor - 20mm Square Plastic Housing multicomp<sup>PRO</sup>

**RoHS  
Compliant**



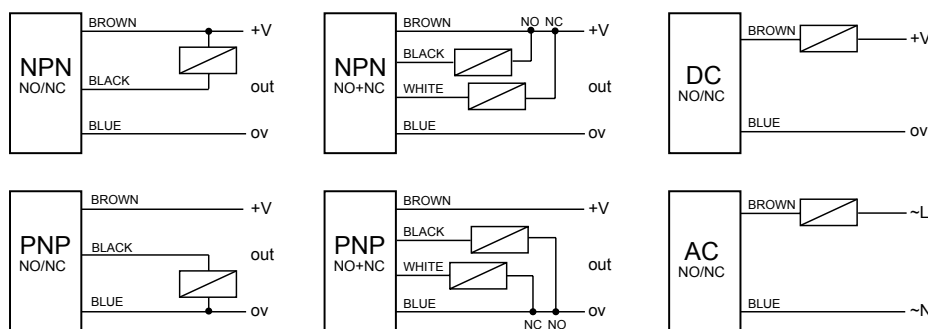
## Features

- Inductive sensor, style: squared shape, 20mm × 20mm × 38mm
- Mounting distance: 8mm shielded
- With LED operation indicate lamp, easily identifiable
- Standard sensing object: ferrous metals
- Protection rate: IP67, water resistant
- Over-current and short circuit protection; against polarity reversal.
- Widely applied in measuring, Counting, Rpm measuring in mechanism, chemical, paper manufacture light industry, etc.

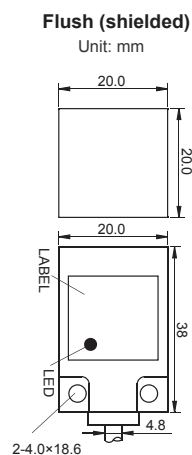
## Specifications

Mounting Distance	: 8mm shielded
Sensing Distance	: 7.2mm shielded
Power Supply	: 10V DC to 30V DC/ 90V AC to 250V AC
Frequency	: 500Hz / 250Hz (DC 3/2 wires) / 25Hz (AC 2 wires)
Current Output (DC)	: 200mA / 300mA
Ambient Temperature	: -20°C to 70°C
Against Polarity Reversal	: Yes
Short Circuit Protected	: 3 wires: Yes / 2 wires: No
IP Rating	: IP67

## Electrical Connection



## Picture Of Product

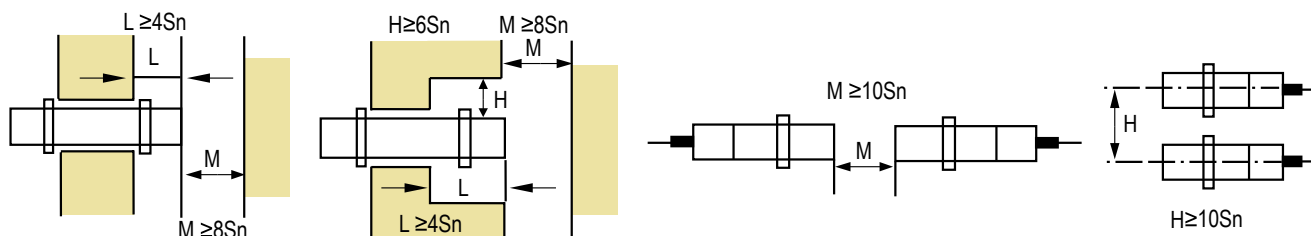


**multicomp<sup>PRO</sup>**

# Inductive Proximity Sensor - 20mm Square Plastic Housing **multicomp**PRO

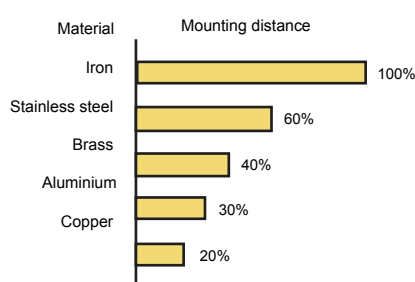
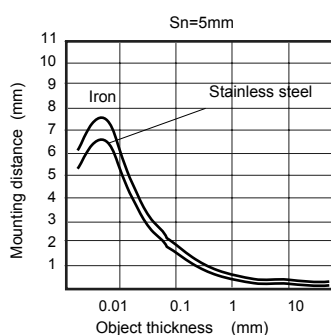
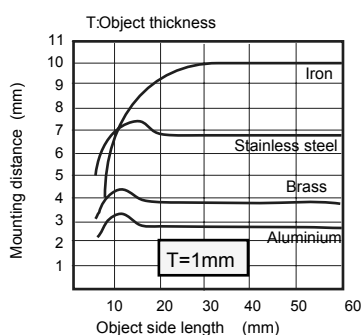
## Installation

If used in an area surrounded by metal, Install the proximity Sensor as follows . ( $S_n$  = Sensing distance)

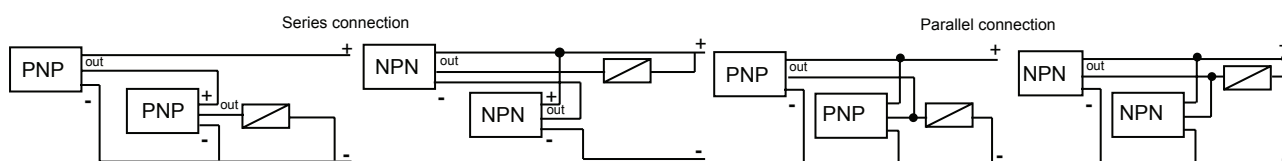


## Inductive Proximity Application Direction

- Set mounting distance equal to 80% of  $S_n$ .
- Set mounting distance roughly equal to 50% of  $S_n$  when sensor is used measuring mounting frequency or operating in high speed circumstances.
- Mounting distance will change depending on material (iron, stainless steel, brass, copper and aluminium).



## D. Inductive Proximity series connection and parallel connection



# Inductive Proximity Sensor - 20mm Square Plastic Housing **multicomp**PRO

**Part Number Table**

Part Number	Output Type	Mounting Distance	Current Output	Power Supply	Wire Connector
MP002229	NPN NO	8mm Shielded	200mA	10V DC to 30V DC	3 Wire
MP002230	NPN NC				3 Wire
MP002231	NPN NO + NC				4 Wire
MP002232	PNP NO				3 Wire
MP002233	PNP NC				3 Wire
MP002234	PNP NO + NC				4 Wire
MP002235	DC NO		300mA	90V AC to 250V AC	2 Wire
MP002236	DC NC				
MP002237	AC NO				
MP002238	AC NC				

**multicomp**PRO