

multicomp PRO



**90W Digital Desoldering Station
Model: MP740415**

Please read these instructions carefully before use and retain for future reference.

IMPORTANT SAFETY INFORMATION

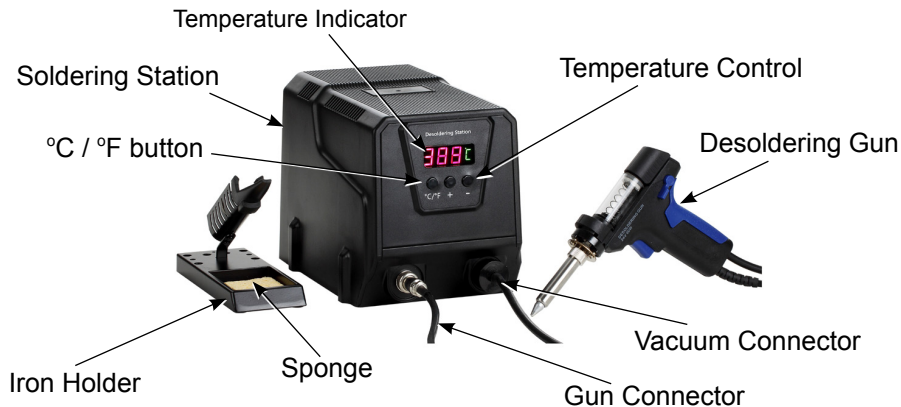
When using electrical appliances basic safety precautions should always be followed.

- Check that the voltage indicated on the rating plate corresponds with that of the local network before connecting the appliance to the mains power supply.
- This appliance can be used by children aged from 8 years and above and persons with reduced physical, sensory or mental capabilities or lack of experience and knowledge if they have been given supervision or instruction concerning use of the appliance in a safe way and understand the hazards involved.
- If the supply cord is damaged, it must be replaced by the manufacturer, its service agent or similarly qualified persons in order to avoid a hazard.
- Do not leave the soldering station unattended, while it is powered on.
- Never touch the soldering tip or the surrounding metallic parts before the soldering tip has cooled down completely.
- Do not use the product near flammable items.
- Turn the power off when this product is not in use.
- The desoldering gun must be placed on its stand when not in use.
- Before storage, turn the power off and allow the product to cool down to room temperature.
- Do not use this product for anything else other than that for which it is designed.
- Children should be supervised to ensure that they do not play with the appliance.
- Do not use this appliance with wet hands.
- Do not expose the soldering station to rain or moisture.
- Ensure there is sufficient space and ventilation around the appliance to allow the escape of heat and/or fumes.
- This appliance must be earthed.

WHAT'S INCLUDED?

- 1 Control Station
- 1 Desoldering Gun
- 1 Desoldering Gun Holder with tray for tip cleaning sponge
- 1 User Manual
- 2 Alternative size nozzles
- 3 Cleaning wires
- 4 Filter pads

OVERVIEW



INSTALLATION

Note: The first time you use the soldering iron, it may smoke slightly as the heating element dries out. This is normal and should only last for a few minutes.

ONLY USE FOR ELECTRICAL WORK - Acidic solder will damage the iron tip.
Designed for use with lead free solders.

- Connect the plug on the desoldering gun lead to the socket on the front of the station and tighten the locking ring finger tight.
- If the equipment is being used for the first time check that a filter pad is inserted inside the threaded socket then connect the vacuum pipe adaptor and tighten by hand to form an air tight seal.
- Push the vacuum pipe fully onto the adaptor stub.
- Place the iron in the holder.
- Before using the soldering iron for the first time, dampen the cleaning sponge and place it in the tray on the holder. Keep it damp during use.
- Connect the mains lead and plug into the mains supply and turn on the power.
- Between use (or during breaks), always put the desoldering gun in the holder.
- The LCD will illuminate when the power is on and shows the previously set temperature.

DESOLDERING

Adjusting the temperature

- Adjust the temperature for the desolder gun by pressing the + or - buttons on the control station front panel.
- Short press + or - to adjust in 1°C increments.
- Long press + or - to increase temperature rapidly in larger increments.
- To change from °C to °F press °C / °F button. The display shows °C or °F after the temperature figure.
- When the desoldering tip reaches the desired temperature place over the solder connection on the back of the PCB.
- When the solder melts, pull the trigger on the desoldering gun.
- The solder will be collected in the reservoir on the top of the gun.
- If the tip becomes blocked use the correct size cleaning wires to clear the blockage.
- Never file down the tips or attempt to clean using abrasives.
- If the tip is worn, replacement tips are available - see our website or catalogue.

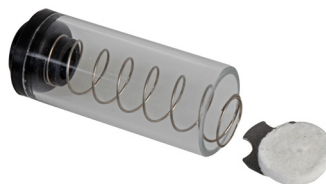


MAINTENANCE

Removing solder waste:

The reservoir must be emptied of solder waste regularly or the efficiency of operation will be impaired.

- Switch off the mains power and allow the desoldering gun to cool.
- Slide the rear cover clear from the reservoir.
- Lift out the reservoir while retaining the filter pad and spring plate in position.
- Remove the filter pad and spring plate and empty out the waste from the reservoir.



- Replace the spring plate and filter into the rear end of the tube and re-insert into the gun ensuring the spring plate and filter are fully engaged inside the tube and the front end is slotted into the gun fully.
- Press on the end of the rear cover and slide it back into position.

NOTE: a new filter pad can be fitted during this process if the one in use is becoming dirty or worn.

SOLDERING IRON TIP REPLACEMENT

- Replacing the soldering iron tip should only be done when the iron is switched off and at room temperature.
- The tip can be changed or replaced by unscrewing the knurled nut barrel and remove the outer tube retainer.
- Invert the tube and the tip will drop out.

Caution: Damage could occur if the iron is left on without the tip inserted.

- After removing the tip, blow out any remaining oxide dust that may have formed in the tip retaining area of the barrel.



Warning: Care should be taken to avoid getting dust in your eyes.

- Slide a new tip down inside the retainer and refit onto the gun.
- Replace and tighten the knurled nut (finger tight only).



Caution: Do not over tighten the nut as the element could be damaged.

CLEANING

- Cleaning should only be done when the power is switched off and the irons are at room temperature. Use a damp cloth and a small amount of liquid detergent if necessary.
- Never submerge the desoldering gun, iron or control station in liquid or allow any liquid to enter the case.
- Do not use any chemicals, abrasives or solvents that could damage the desoldering gun, interconnecting leads and pipe, soldering iron or the control station.
- If the vacuum efficiency seems to be reducing, pull off the vacuum pipe from the control unit and unscrew the adaptor.
- Do not lose the sealing washer from inside the adaptor.
- Pull out the filter pad from inside the connector on the control unit and examine for blockage.
- Replace with a new one if required (supplied).

TROUBLESHOOTING

- Tip will not reach set temperature - Defective heating element
- Solder will not wet the tip -

Tip temperature is too high.
Tip is badly oxidized and requires cleaning.

SPECIFICATIONS

Power Consumption	90W
Input Voltage	220-240V~50Hz
Output Voltage	24V AC
Temperature Range	160-480°C
Temperature Accuracy	+/-5°C
Vacuum Pressure	600mm HG



INFORMATION ON WASTE DISPOSAL FOR CONSUMERS OF ELECTRICAL & ELECTRONIC EQUIPMENT.
When this product has reached the end of its life it must be treated as Waste Electrical & Electronics Equipment (WEEE). Any WEEE marked products must not be mixed with general household waste, but kept separate for the treatment, recovery and recycling of the materials used. Contact your local authority for details of recycling schemes in your area.

Made in China. LS12 2QQ
Man Rev 1.0