

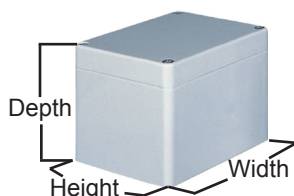
# Multipurpose Boxes with Lids

## G2 Series

**Multipurpose IP65  
ABS**



**Multipurpose IP65  
Polycarbonate**



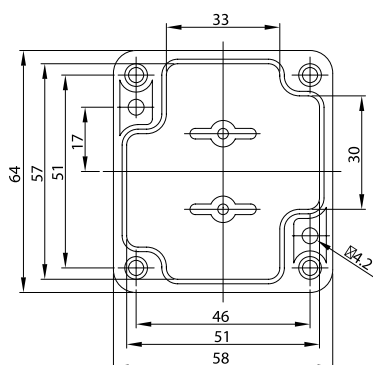
### Features:

- The LID and base incorporate a tongue and groove sealing system with a neoprene gasket
- Wall mounting holes and LID fixing screws are outside the sealing area thus preventing the ingress of moisture and dust
- Designed to IP 65 of IEC 529 and nema 4 (dust and hoseproof)
- Internal guide slots for mounting PCB assemblies vertically
- Bosses on internal base allow fixing of PCB's horizontally or connection of terminals, etc into threaded brass inserts
- LID fixing screw are M-4 stainless steel (nonmagnetic) into threaded brass inserts
- Polycarbonate is an engineering thermoplastic that has good electrical insulation characteristic and heat resistance which make them ideal for use in the electrical and electronics industries
- Available with Nickel Acrylic coating on the internal surfaces which improves EMI and RFI shielding of the enclosure

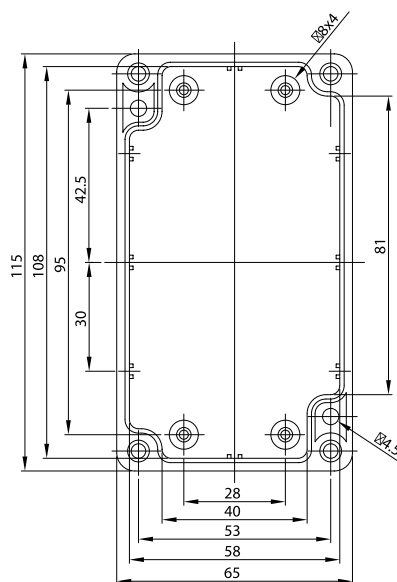
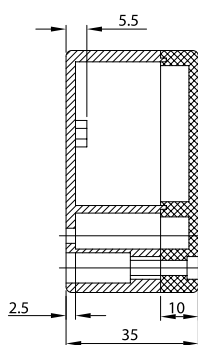
### Specifications:

Type	: IP65, PC (Polycarbonate boxes sealed to IP65)
Wall Thickness	: 3mm
Colour	: Light Grey
Operating Temperature	: -40°C to +125°C

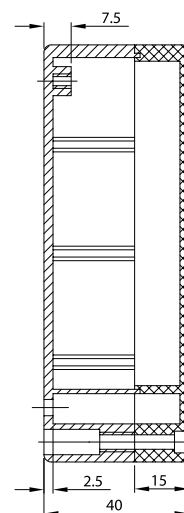
### Dimensions of Boxes



**G201**



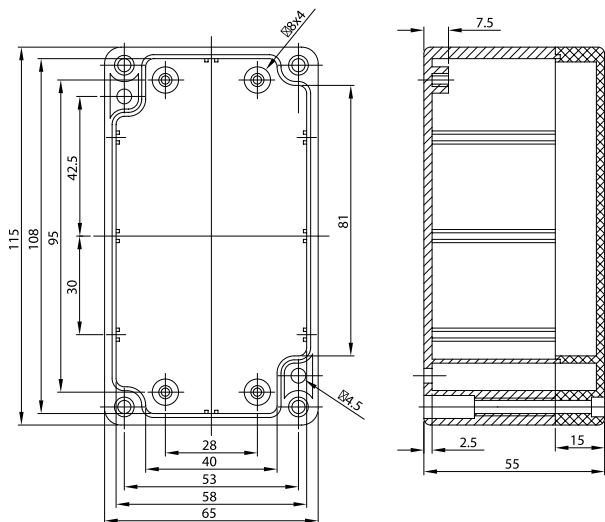
**G203**



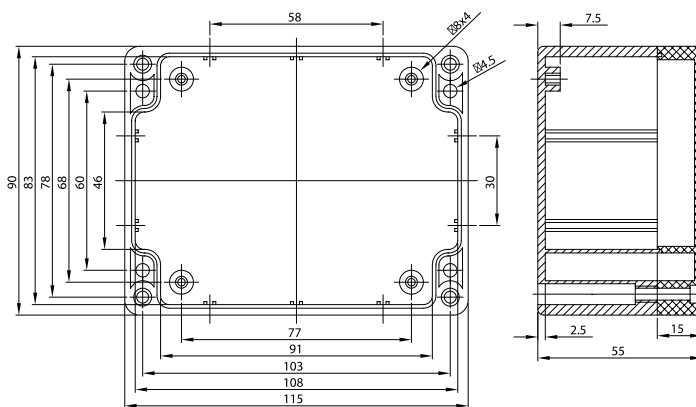
Dimensions : Millimetres

# Multipurpose Boxes with Lids

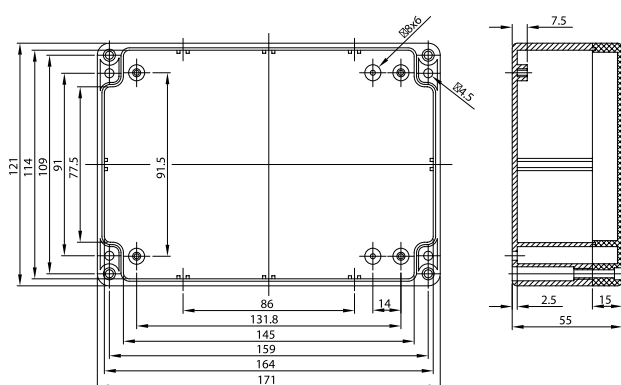
## G2 Series



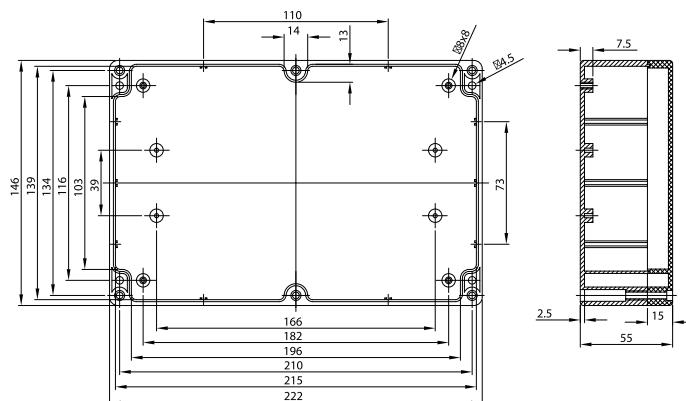
**G205**



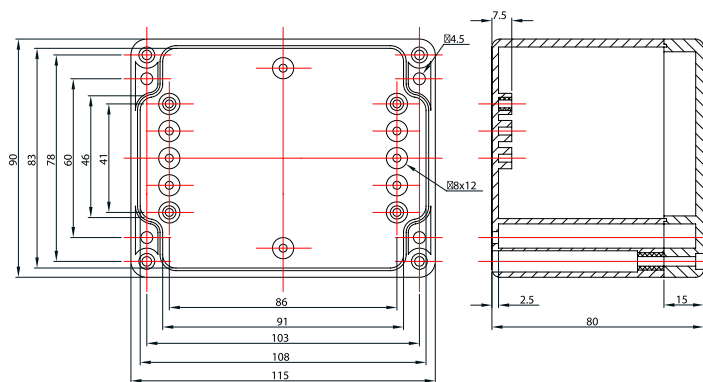
**G212**



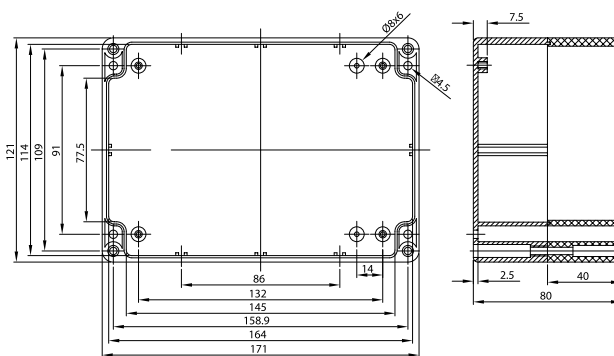
**G214**



**G218**



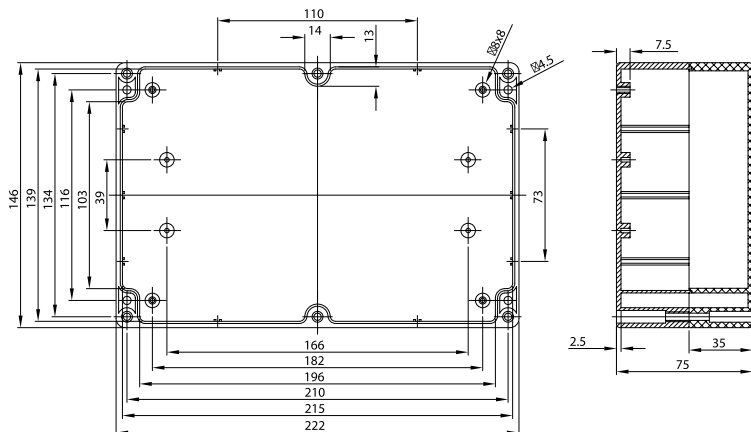
**G221**



**G223**

Dimensions : Millimetres

# Multipurpose Boxes with Lids G2 Series



**G232**

Dimensions : Millimetres

## Part Number Table

Description	External Dimensions (W × H × D) mm	Part Number
Sealed Polycarbonate and ABS Enclosures	64 × 58 × 35	G201
	115 × 65 × 40	G203
	115 × 65 × 55	G205
	115 × 90 × 55	G212
	171 × 121 × 55	G214
	222 × 146 × 55	G218
	115 × 90 × 80	G221
	171 × 121 × 80	G223
	222 × 146 × 75	G232

