

# Multipurpose Enclosure

**multicomp**PRO



## Specifications

### Polycarbonate material

Moulded in : Light grey.  
Operating Temperature : -40°C to 120°C.  
Clear lid is available on request.

### High impact ABS material

Moulded in : Dark grey.  
Suggested operating Temperature : -20°C to 80°C.

The lid and base incorporate a tongue and groove sealing system with a neoprene gasket.

Wall mounting holes and lid fixing screws are outside the sealing area thus preventing the ingress of moisture and dust.

Designed to IP 65 of IEC 529 and nema 4 (dust and hoseproof).

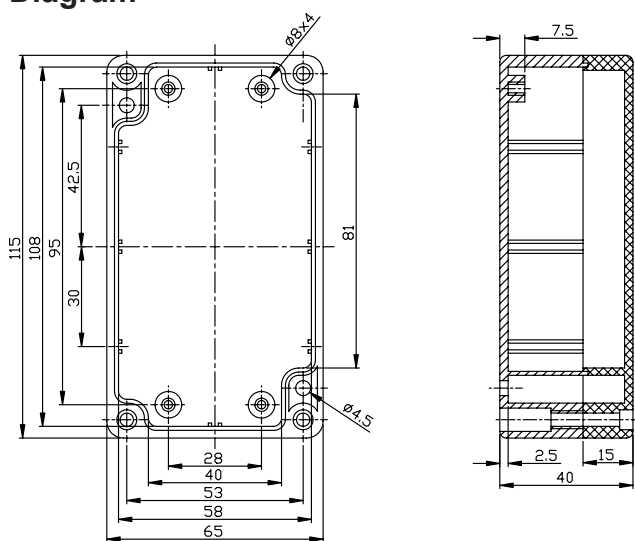
Available with clear or light grey LIDS.

Internal guide slots for mounting PCB assemblies vertically.

Bosses on internal base allow fixing of PCB's horizontally or connection of terminals, etc into threaded brass inserts.

Lid fixing screw are M-4 stainless steel (nonmagnetic) into threaded brass inserts.

## Diagram



Dimensions : Millimetres

## Part Number Table

Description	Colour	Material	External Dimensions (mm)	Part Number
Box, ABS, IP65, Grey	Dark Grey	ABS	115 × 65 × 40	G304

**multicomp**PRO