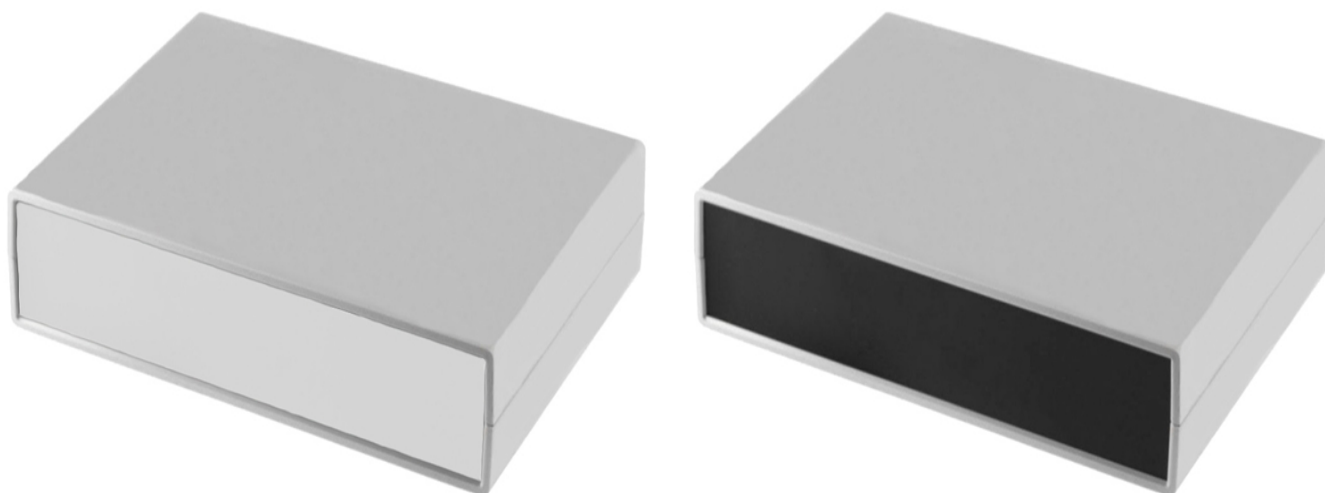


Desktop Cases - ABS

multicomp^{PRO}

Description

The Desktop Instrument Case are made of ABS (acrylonitrile butadiene styrene). This G7-series case with black ABS (Acrylonitrile Butadiene Styrene) panels, high impact textured grey ABS cases. PCB Mounting pillars for self-tapping screws. Guide slots for vertical mounting PCBs.

multicomp^{PRO}